

VOLUNTEERS

House Corp. President
Harry Fisher '89
harry.fisher@
healthresearchtx.com

Vice-President
Steven Sloan '77
stevensloan@sprynet.com

Alumni Chairman
Michael Mehl
mmehl@sas.upenn.edu

Undergraduate President
William Locke



BY THE NUMBERS

120

Years of SAE at Penn

3908

Spruce Street

\$25,000

Annual Fund Goal

\$5,973

Raised as of Mar. 2

25

Alumni Donors
Have Given

3

Ways for YOU to Give

1. Make a gift online at www.saepath.org.
2. Call our toll-free Donation Hotline at **1-800-975-6699**.
3. **Mail a check** using the enclosed envelope and donation form.

SIGMA ALPHA EPSILON PENNSYLVANIA

www.saepath.org

Newsletter of the Pennsylvania Theta Chapter at the University of Pennsylvania • March 2022

UNDERGRAD UPDATE

A Letter from William Locke – Eminent Deputy Archon

Dear Alumni of SAE Penn Theta,

I am thrilled to announce that thanks to the generosity of our alumni we have raised over \$132,000 for the SAE Penn Theta Scholarship Fund. This is over half of the way to reaching our campaign benchmark of \$250,000, where all brothers on significant amounts of financial aid would have their national dues and expenses paid for by the scholarship fund. This is a meaningful benchmark because at this point every dollar a brother on a significant amount of financial aid contributes to fraternity dues will return directly to them through services provided by the chapter.

For a number of years the actives have offered a dues-reduction program to brothers on significant amounts of financial aid. This generosity, and the impact it has had on the diversity and quality of the men in Penn Theta, was a significant draw for me and for many others to join. Unfortunately, this dues-reduction program can only go so far, and many members still have difficulty affording the expenses of fraternity life. This fund allows for students on significant amounts of aid to join our chapter, to afford our meal plan, to live in the house, and to attend other brotherhood and social events without financial concern.

We intend to nominate our first class of Penn Theta Scholars this spring. We are greatly appreciative to the alumni who have contributed to the fund so far and we are excited for a new chapter of inclusivity and excellence for Penn Theta.

In the bonds,

William Locke

Eminent Deputy Archon – SAE Penn Theta
College of Arts and Sciences '23

SAVE THE DATE



Alumni Weekend is back on campus on May 13–16.

You can find more details at alumni.upenn.edu.

SAE was an important part of my college experience

Eric Berger '87 (eberger@usrealestateacq.com) says that he decided to pledge to SAE while working at the law school dining service with Ken Brunetti '86, who talked up SAE during their shifts working together.

He soon decided that it was where he belonged. He remembers it being made up of "laid back good guys who enjoyed wall ball. We had great winter beach parties and Paddie Murphy parties which were really well-attended."

He says another one of his best memories was of a late-night party. "Late one night we were having a party and ran out of grain alcohol, so we filled the empty bottle with water. Someone complained that the grain alcohol punch was too weak, so I poured water into the punch from the grain alcohol

"We had a very short period of time to make a positive first impression that determined success or failure, which is more real world than anything else in college."

bottle. The person said that it was much better and went away happy!"

He says that SAE – and rush especially – prepared him for life. "We had a very short period of time to make a positive first impression that determined success or failure, which is more real world than anything else in

college."

He says that giving back is crucial.

"There is an assumption that nothing changes," he says, "That the House and SAE will always be there for the next generation no matter what. However, the reality is that without alumni financial support SAE might simply fade away. It is expensive to maintain an older home while providing a meaningful fraternity experience. Tuition and fees have skyrocketed, which puts a lot of financial pressure on the students and their families."

"SAE was an important part of my college experience and I trust that it has also been for those who came after me. The House was always short of funds and there were always unexpected expenses. Now that I am in a position to help, even if it's just a little bit, I have always wanted to do so."

SAEPATH.ORG

It's easier than ever to reconnect

Have you checked out the new saepath.org? It's easier than ever to read the latest news about Penn Theta, see our photo galleries, or track down an old roommate.

A screenshot of the saepath.org website on a monitor. The website has a purple header with navigation links: HOME, ABOUT, NEWS, GALLERY, ALUMNI, CONTACT, and DONATE. There are also links for LOG IN and MY ACCOUNT. The main content area features a large photo of a group of people. Several blue callout boxes point to different parts of the website: NEWS (Stay up to date on Penn Theta news and events), GALLERY (View photos from each decade in the house, and add your memories as well.), ALUMNI (Find your roommate, search for brothers while you are traveling, or plan your next mini reunion.), CONTACT (Submit an update about yourself or send a message to the alumni board.), and DONATE (Give back to Penn Theta.). At the bottom of the website, there are buttons for UPDATE MY INFO and SHARE ALUMNI NEWS, and a question mark icon.

THROWBACK

A look back at 1960

The year was 1960. The United States just announced that 3,500 American soldiers are going to be sent to Vietnam. The first-ever televised U.S. Presidential debate takes place between Kennedy and Nixon, and later that year Kennedy wins the election. The classic novel “To Kill a Mockingbird” was published. A new house cost the average of \$12,700.00 and a gallon of gas cost 25 cents.

Meanwhile, *The Record* yearbook reports:

“During the winter months of the past year, the social life of Sigma Alpha Epsilon reached its apex in its Christmas Formal. Later in the year, the fraternity brothers decorated their house in the style of a southern mansion for their Old South Ball. In the spring, a Bacchanalian night was recreated when the brothers and their dates came

Roman-style to the SAE Toga party. The house participated in the Campus Chest Carnival and other philanthropic endeavors, while ranking 12th scholastically in the IF ratings.”

Do you have a photo of your time in the SAE house? Share it with the brothers by emailing to alumninews@affinityconnection.com.



Front Row: C. Carter, W. Slater, J. Vosmek, Jr., J. Neal, Jr., G. Lohf, R. Crawford, R. Fresh, D. Whittaker, E. Serrano.
Second Row: V. Castelluccio, B. Simon, J. Murgo, K. Pipher, J. Nolan, R. Lerrabee, J. Pace, B. Tobin, J. Cobb, R. Vogel.
Third Row: F. J. Carmone, Jr., R. D. Sawyer, X. McGeedy, D. Fick, J. Kyle, W. Dwyer, P. Arnold, J. van Amerongen, G. Pine, S. Goff, B. Whittaker, J. Espino, J. J. LaFemina, Jr., A. Figel.
Back Row: A. DaPonte, J. P. Fazio, C. E. Hansing, F. C. Norcross, D. Brunn, J. Eichelberger, W. Rumble, J. Vander Wiele, P. Bodine, T. Sloan, R. Kuhl, J. McConnell, R. E. Ditz, J. Murrell.



LIFELONG FRIENDS

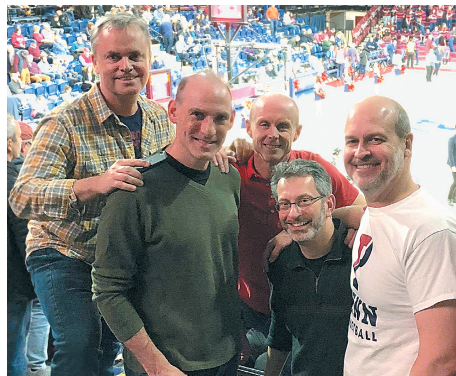
The older we get, the more we need our friends—and the harder it is to keep them

When you're in middle age, you start to realize how very much you need your friends. After decades of relentless striving — kids, house, career, spouse — we find ourselves coming up for breath at some point in these middle decades. And what remains? With any luck, our friends.

A recent *Atlantic Monthly* article (do yourself a favor and read it at tinyurl.com/lifelongfriends), says that according to the Stanford Center on Longevity, those of us over 40 have aged out of the friendship-collecting business, which tends to peak in the tumbleweed stage of life, and move into the friendship-enjoying business, luxuriating in the relationships that survived as we put down roots.

The problem? Those friendships are awfully hard-won. Life's significant upheavals and changes can prove too much for many friendships to withstand. As years go by, some of the dearest people in your life have gently faded away.

But these bonds with friends are more than an extra in your life story — they *are* the story. Over and over, we hear stories of how SAE



friends drove overnight to be in weddings, wept together at funerals, cheered at the news of new babies, toasted promotions, and gathered together in adversity. In a nutshell: the friendships we gained — and still have — with SAE brothers is exquisitely rare in today's world.

Author Jennifer Senior says, “Practically everyone who studies friendship says this in some form or another: *What makes friendship so fragile is also exactly what makes it so special. You have to continually opt in. That you choose it is what gives it its value.*”

Our Penn Theta friendships have seen us through so much, but don't take them for granted. Take a minute to text or call your roommate, or intramural teammate, and tell them that you are thinking of them. Our friendships have fueled these decades since graduation... Let's keep it going.

P.S. Don't have the most recent contact information? We do! Head over to saepath.org.

TOP 50 DONOR PROFILE

Steven Robert Sloan '77: Without Sigma Alpha Epsilon, I wouldn't be as happy as I am today

Steven Robert Sloan '77 (stevensloan@sprynet.com) says that he pledged to SAE to stay in touch with his roots. "I knew of SAE as "southern" fraternity," he says. "And in 1974 when I went to Penn, southerners were scarce there and thought this would be a good anchor to my roots. And a number of members were southerners!"

He soon found that he made the right choice. "We had a good group of brothers. It was a smaller chapter, so everyone got along and knew each other well. Brothers were both excellent students as well as hard partiers! We knew how to balance the two."

He says that he especially treasures memories of spring break trips that he and other brothers took to Daytona Beach.

SAE's influence lasted well after his time at Penn. "It made a big-time impact on me," he says. "My two best friends to this day are brothers, and I've kept up with others. I am proud to tell people I was a SAE and have met many others from other schools. Being a

Being a member opened my world to others that came from different backgrounds than myself."

member opened my world to others that came from different backgrounds than myself."

Steven says that giving back to SAE is crucial. "My SAE experience defined my college years for the better. I donate and serve as chapter advisor so that others can enjoy the valuable experience that I had."

And if more give back? "We could make improvements to the physical plant of chapter house. We'd have more funds available to provide scholarships for fraternity expenses. It's a different world than the '70s when all of us came from considerable means to cover these expenses."

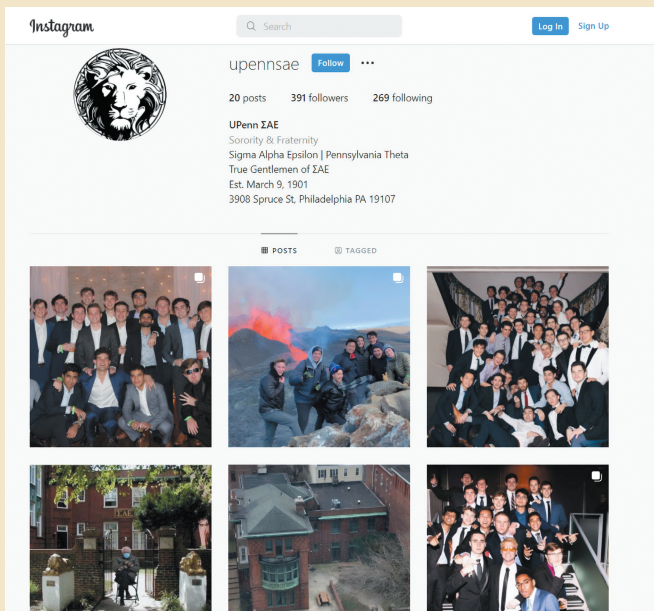
"Please support the Greek system at colleges anyway you can," he adds. "It is always under assault and needs to be protected."

Without Sigma Alpha Epsilon, I wouldn't be as happy as I am today.

ACTIVES

Undergrads head into spring

On January 5, the undergrads posted
 "The countdown to campus spring 2022 starts now!
 We can't wait to see everyone in 10 days!"
 You can keep up with the active chapter at
[instagram.com/upennsae/](https://www.instagram.com/upennsae/)

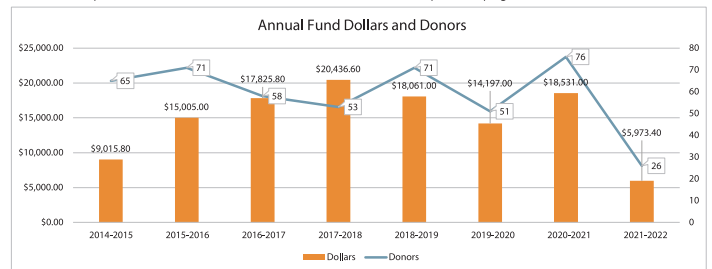


FLASH REPORT

Our Giving Trends

A healthy fraternity is at the heart of everything we strive to be. To keep our fraternity healthy, we keep a close eye on the key statistics and our brothers. With your support we are able to help fund reunions, support the future of Sigma Alpha Epsilon, and keep our alumni communications strong.

Sigma Alpha Epsilon University of Pennsylvania Date Run 3/1/2022 Fiscal Year 9/1
 This report includes contributions to the Annual Fund. Event and Capital Campaign Contributions are excluded.



Donations by Decades (Last 8 Years)

1990-1999	\$32,925.00
1980-1989	\$26,331.40
1950-1959	\$26,003.00
1960-1969	\$18,630.40
1970-1979	\$6,900.80
1940-1949	\$1,950.00
2000-2009	\$1,280.00
2010-2019	\$25.00
2020-2029	\$0.00